

## POVERTY AND HOPE APPEAL

### Financial Overview: August 2018

Since 1977, the Poverty and Hope Appeal has distributed over £1.4 million to development projects across the world. The Appeal reaches the communities and projects it supports by working through well-respected Christian charities. This provides assurance that the moneys raised and distributed reach their proper destination.

*Details of the Appeal and updates on projects can be found on the Poverty and Hope home page, together with contact details for making donations, obtaining brochures and gift aid envelopes, or arranging a speaker.*

#### Financial Overview

The Poverty and Hope Appeal year begins in May when the new project brochures are sent out to the parishes. Many parishes support the Appeal at Harvest or Christmas, and we receive most of our donations between October and February. Distributions to the projects we are supporting are normally made in the following July or August, after the end of the Appeal year and once we have received the tax refund on gift aided donations.

The income pie charts show income and expenditure for the Appeal years 2011 to 2017 and corresponding distributions made between 2012 and 2018. The charts include gift aid refunds associated with those donations, including refunds received after the end of the relevant year. In addition, a bequest of £20,000 was received in July 2012. The Appeal Committee decided to spread the benefit of the bequest and it was used to enhance giving to projects between 2013 and 2017. With this source of funds no longer available to support giving in 2018, the number of projects supported by the 2017 Appeal was reduced from six to five. Expenses comprise the costs of producing the brochures, posters and gift aid envelopes, together with postage. The Appeal Committee members do not claim general expenses in connection with the Appeal.

#### Poverty and Hope Appeal 2017, distributions made during 2018

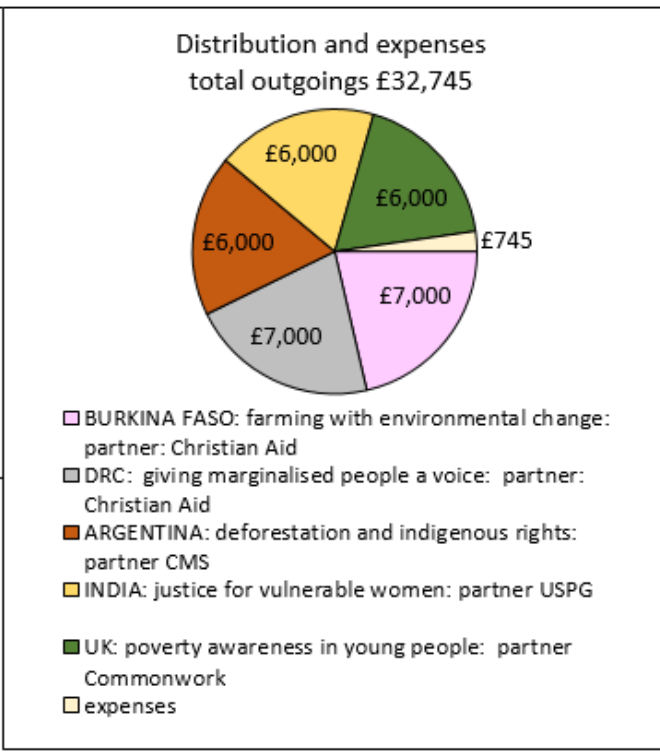
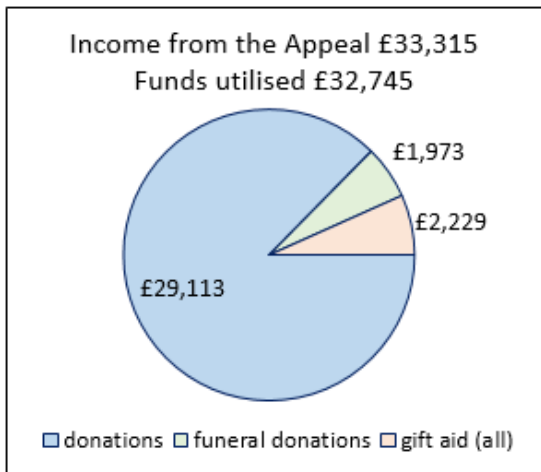
The 2017 Appeal year finished at the end of April 2018. Our partners during the 2017 Appeal were Christian Aid, CMS, USPG and Commonwork, based here in Kent. Overseas projects are usually run by local organisations which are supported by our partners. Our partner organisations thus not only provide invaluable support on the ground but have the processes in place to monitor the projects and give us the necessary assurances that the moneys raised by the Poverty and Hope Appeal are properly applied.

During 2018, we distributed £33,000 from our 2017 Appeal to five projects:

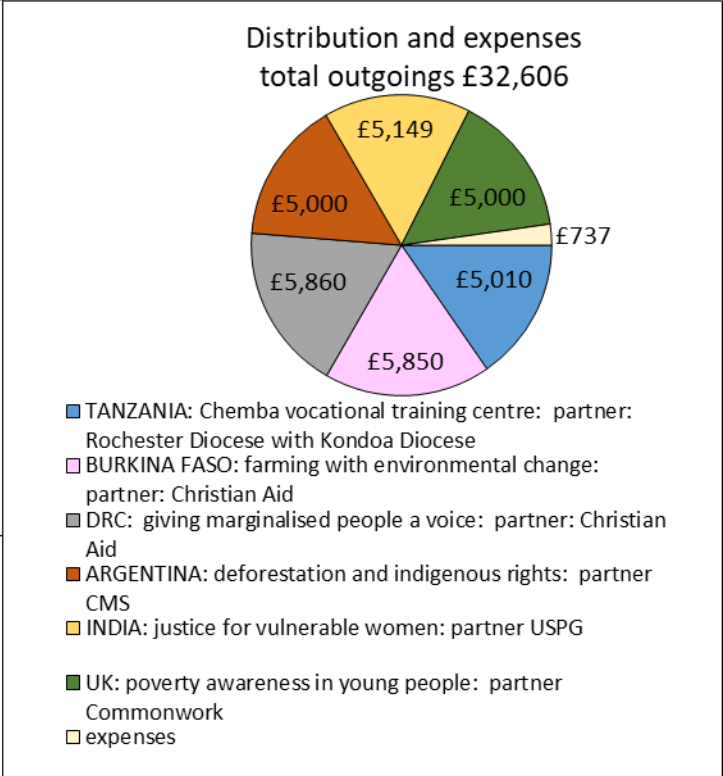
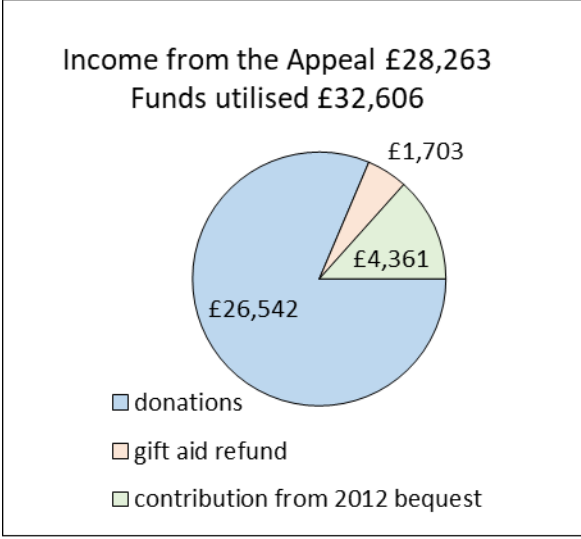
<b>Burkina Faso:</b> helping farmers cope with environmental change	£7,000
<b>Democratic Republic of Congo (DRC):</b> giving marginalised people a voice	£7,000
<b>India:</b> empowering vulnerable women through community councils	£6,000
<b>Argentina:</b> supporting marginalised people and protecting their land	£6,000
<b>Kent:</b> connecting children with the global crises of poverty and injustice	£6,000

The following pie charts illustrate our income and expenditure. Income from donations increased from £26,560 for the 2106 Appeal to £29,113. Gift aid recoveries on those donations came to £1,960.58. A further £2,237 was raised at the funeral of Vivian Walton, including gift aid of £264. Vivian was a committee member and treasurer of the Poverty and Hope Appeal for many years. At the close of the 2017 Appeal, cash reserves amounted to £996, sufficient to cover the launch costs of the 2018 Appeal.

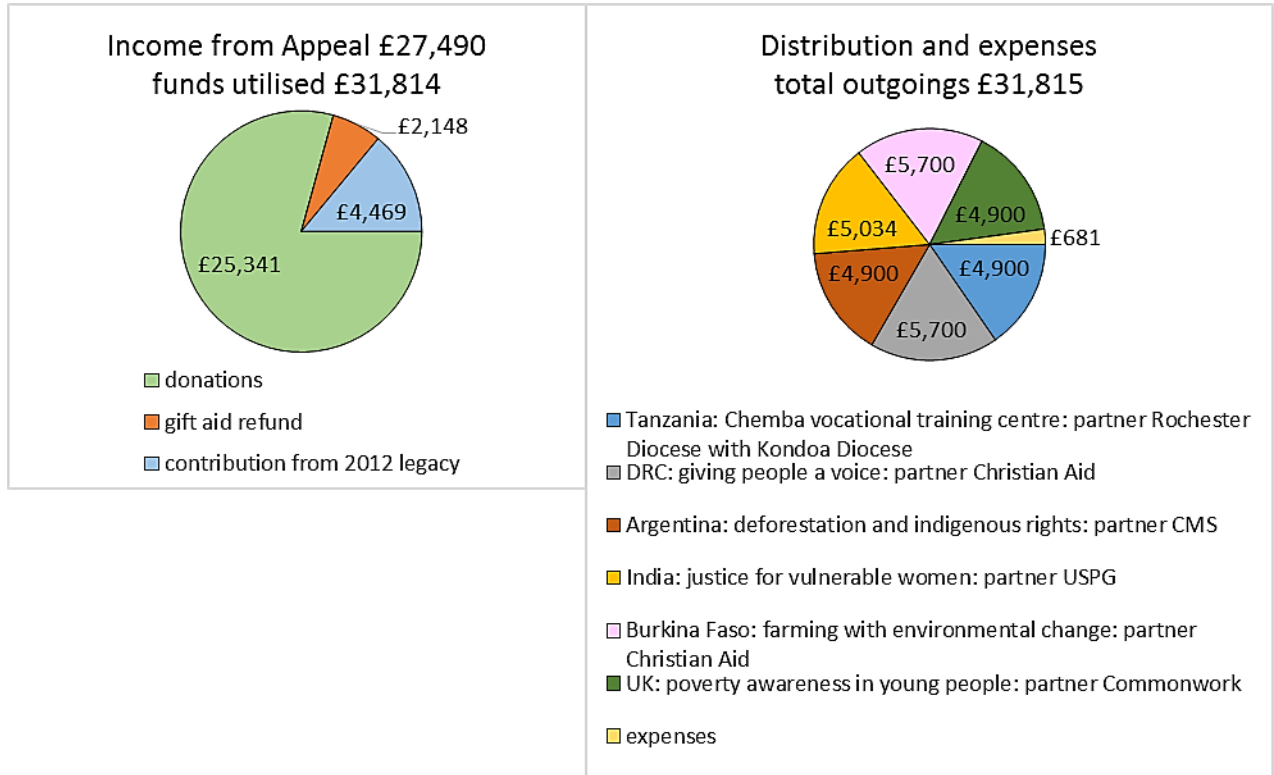
**Poverty and Hope Appeal 2017, distributions made during 2018**



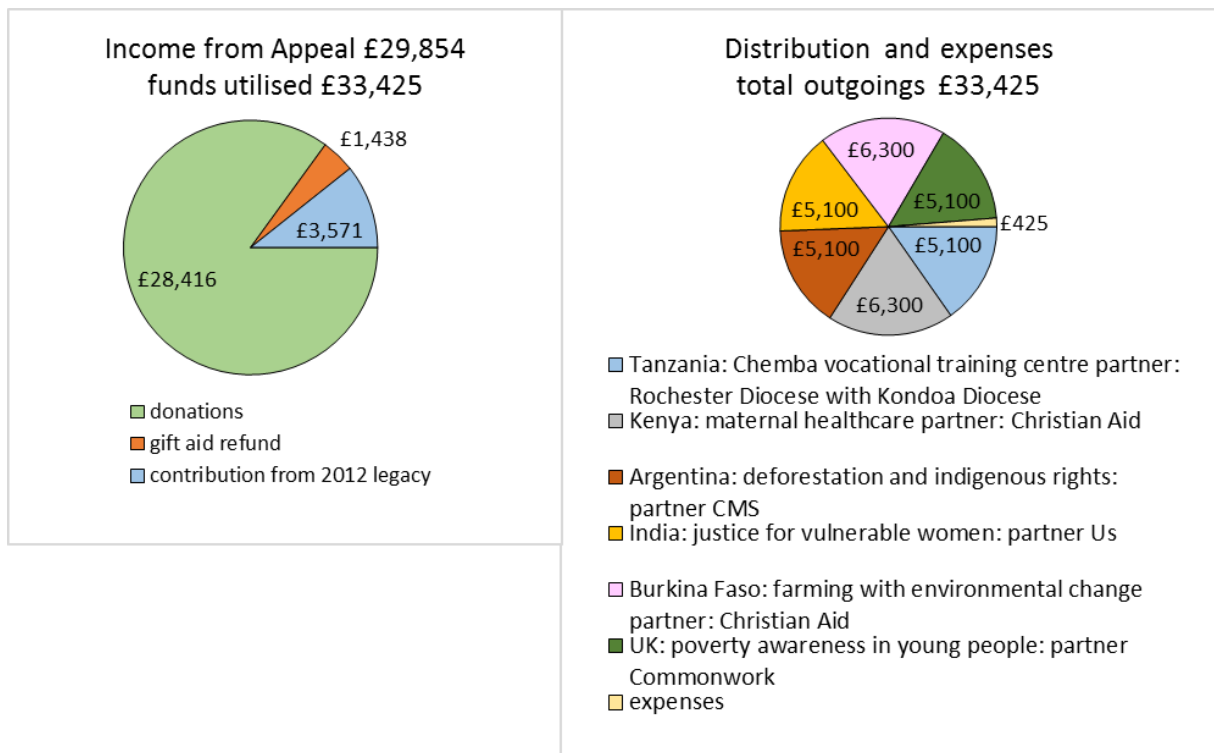
**Poverty and Hope Appeal 2016, distributions made during 2017**



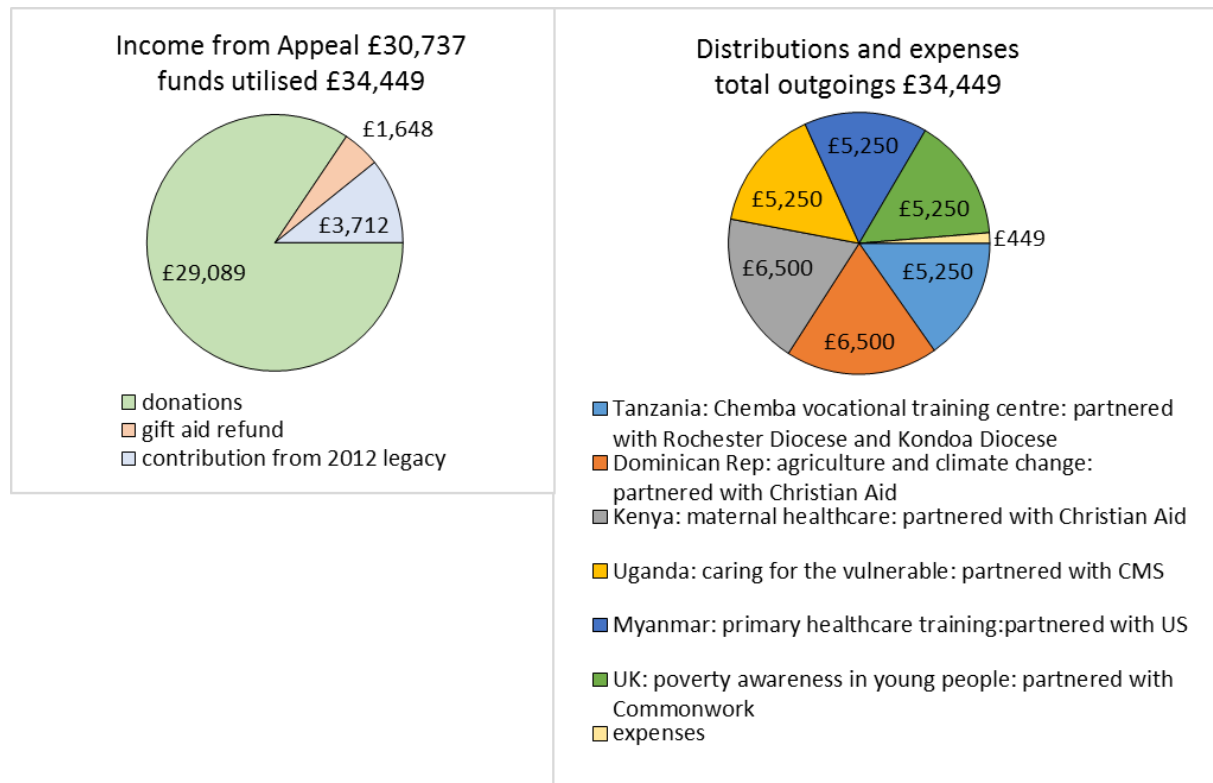
### Poverty and Hope Appeal 2015, distributions made during 2016



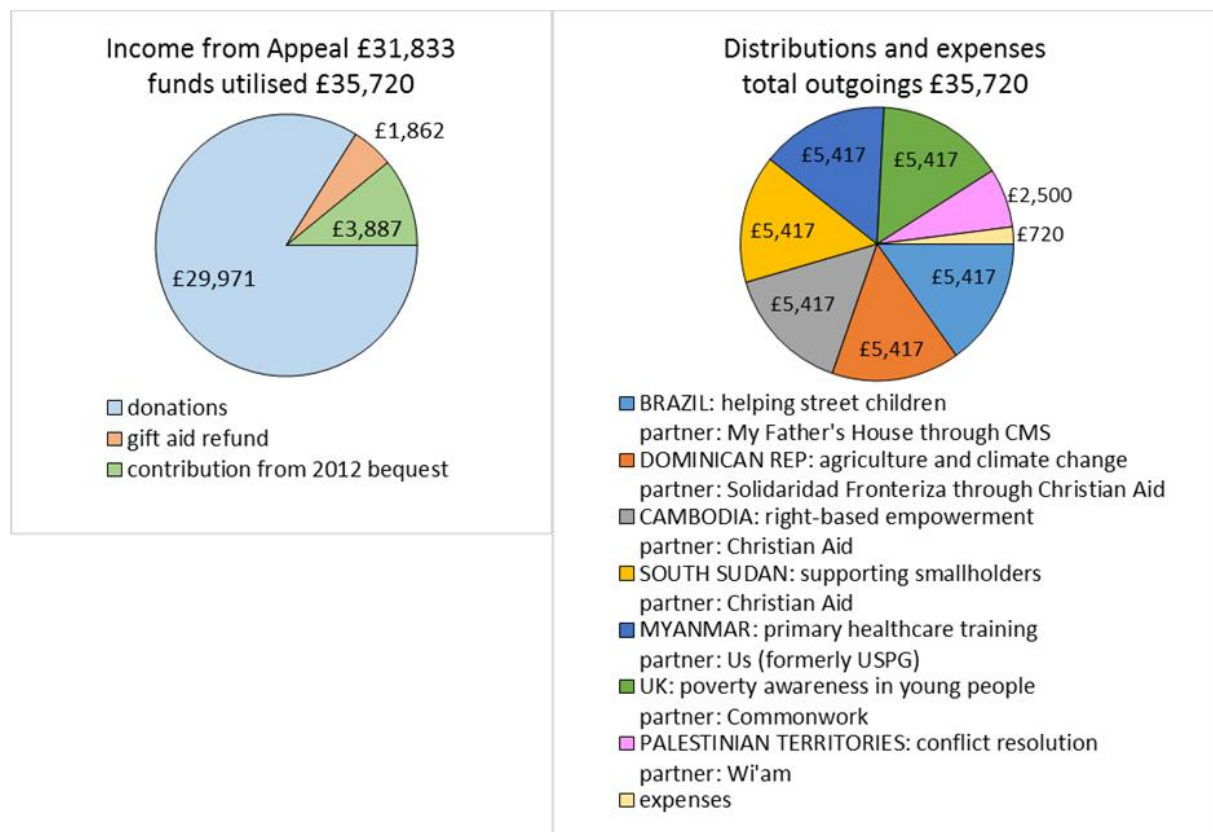
### Poverty and Hope Appeal 2014, distributions made during 2015



### Poverty and Hope Appeal 2013, distributions made during 2014



### Poverty and Hope Appeal 2012, distributions made during 2013



**Poverty and Hope Appeal 2011, distributions made during 2012**

